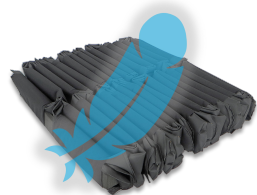
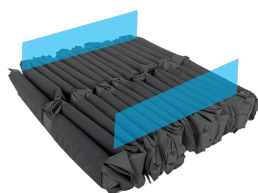


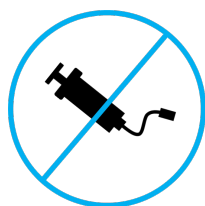
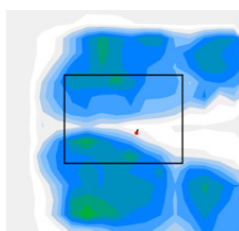
Introducing our innovative Woven Air wheelchair cushion range designed to provide unparalleled support and comfort without the need for constant upkeep. Our unique design ensures “flotation without inflation,” meaning you never have to worry about inflating or checking inflation levels. Enjoy a maintenance-free experience that offers reliable support and comfort, enhancing mobility and independence.

LIGHTWEIGHT



LATERAL
STABILITY

PRESSURE
REDISTRIBUTION



NO MAINTENANCE

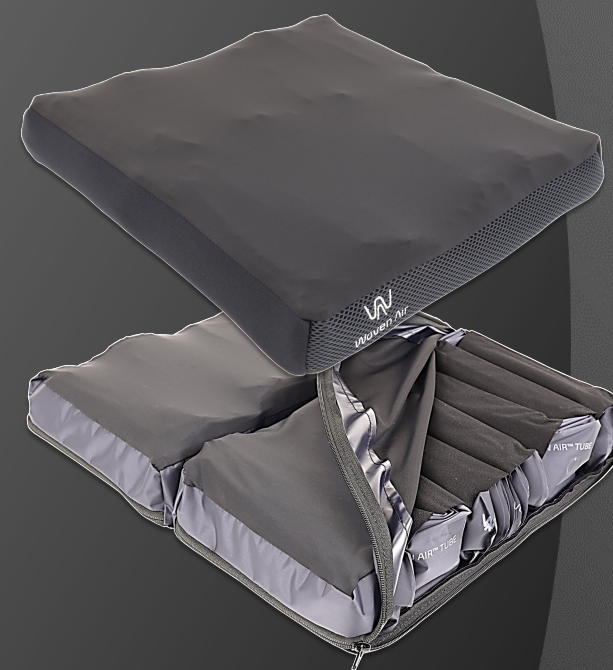
ISO TESTED
ISO 16840-2:2018
ISO 16840-6:2015
ISO 16840-13:2021
ISO 16840-12:2021




Woven Air

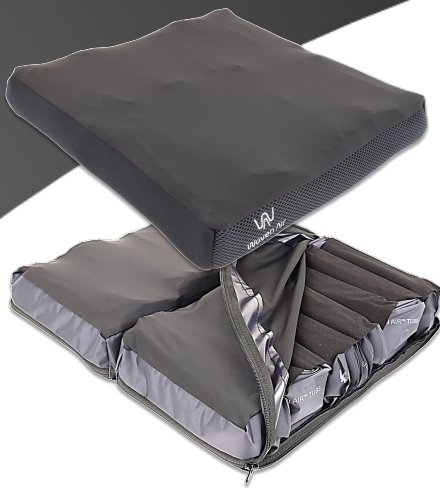
P: 03 4135 2558
E: sales@rolapal.com.au
W: www.rolapal.co.nz


Woven Air



**Flotation
Without Inflation**

By **ROLAPAL**



Woven Air Cushion

The Woven Air cushion is segmented into 4 zones allowing the air to flow freely within each zone promoting positioning and pressure redistribution. Weight = 1.05kg (18x18). 75mm height under user.

WAC1414	WAC1416	WAC1418	WAC1515	WAC1516
WAC1517	WAC1616	WAC1618	WAC1620	WAC1717
WAC1719	WAC1816	WAC1818	WAC1820	WAC1822
WAC1919	WAC2018	WAC2020	WACCUST	WACCUSTXL

- Outer Cover only add "OC" to end of code • Inner Cover only add "IC" to end of code
- Air Pocket only add "AP" to end of the code • Contour Base only add "CB" to end of the code



Sprint Cushion

The Dreamline Woven Air Sprint Cushion is an ultra-lightweight, slim cushion that features a stable closed-cell foam base. It provides extra support under the thighs and incorporates Woven Air technology in the ischial region, making it an excellent choice for self-propelling users.

WSC1414	WSC1416	WSC1418	WSC1515	WSC1516
WSC1517	WSC1616	WSC1618	WSC1620	WSC1717
WSC1719	WSC1816	WSC1818	WSC1820	WSC1822
WSC1919	WSC2018	WSC2020	WSCCUST	WSCCUSTXL

- Outer Cover only add "OC" to end of code • Inner Cover only add "IC" to end of code
- Air Pocket only add "AP" to end of the code • Thigh Pad only add "CW" to end of the code



Woven Air Inserts for G7 and STX2 Cushions

Woven Air Inserts are designed to fit in the Ischial well of Dreamline G7 and STX2 cushions as an alternative to the Gel Cluster Packs.

WAI1414	WAI1416	WAI1418	WAI1515	WAI1516	WAI1517
WAI1616	WAI1618	WAI1620	WAI1717	WAI1719	WAI1816
WAI1818	WAI1820	WAI1822	WAI1919	WAI2018	WAI2020
WAICUST	WAICUSTXL				

- Air Pocket only add "AP" to end of the code



STX2 with Woven Air

DX2CW1414	DX2CW1416
DX2CW1418	DX2CW1515
DX2CW1516	DX2CW1517
DX2CW1616	DX2CW1618
DX2CW1620	DX2CW1717
DX2CW1719	DX2CW1816
DX2CW1818	DX2CW1820
DX2CW1822	DX2CW1919
DX2CW2018	DX2CW2020
DX2CWCUST	DX2CWCUSTXL

- Outer Cover only add "OC" to the end of ORIGINAL STX2 code
- Inner Cover only add "IC" to the end of ORIGINAL STX2 code
- Comfort Wrap only add "CW" to end of code



G7 with Woven Air

D7CW1414	D7CW1416
D7CW1418	D7CW1515
D7CW1516	D7CW1517
D7CW1616	D7CW1618
D7CW1620	D7CW1717
D7CW1719	D7CW1816
D7CW1818	D7CW1820
D7CW1822	D7CW1919
D7CW2018	D7CW2020
D7CWCUST	D7CWCUSTXL

- Outer Cover only add "OC" to the end of ORIGINAL G7 code
- Inner Cover only add "IC" to the end of ORIGINAL G7 code
- Comfort Wrap only add "CW" to end of code

Woven Air Tubes



FOR WOVEN AIR CUSHIONS		
WAT1470	WAT1570	WAT1690
WAT1790	WAT1890	WAT1990
WAT2090	WAT90CUSTXL	
FOR SPRINT CUSHIONS		
WAT1470	WAT1570	WAT1670
WAT1770	WAT1870	WAT1970
WAT2070	WAT70CUSTXL	
FOR STX2/G7 CUSHIONS		
WAT1460	WAT1560	WAT1660
WAT1760	WAT1860	WAT1960
WAT2060	WAT60CUSTXL	

Pelvic Obliquity Pads

DCOP14	DCOP18
DCOP18	DCOP20

